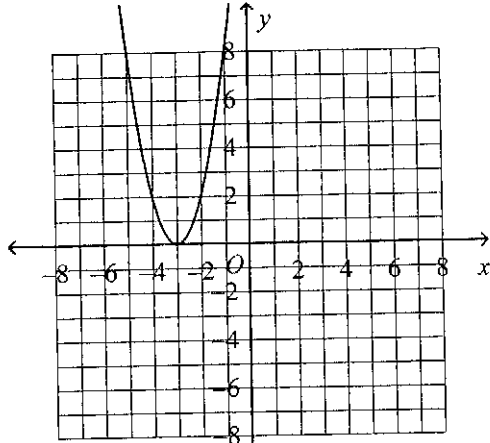


Post-Assessment CP Algebra II REVIEW

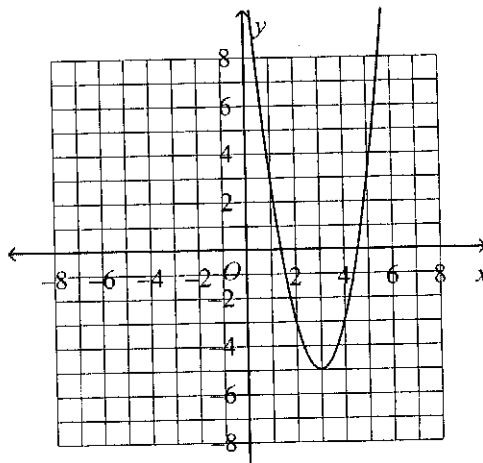
B

1. Which is the graph of $y = 2(x + 3)^2 - 5$?

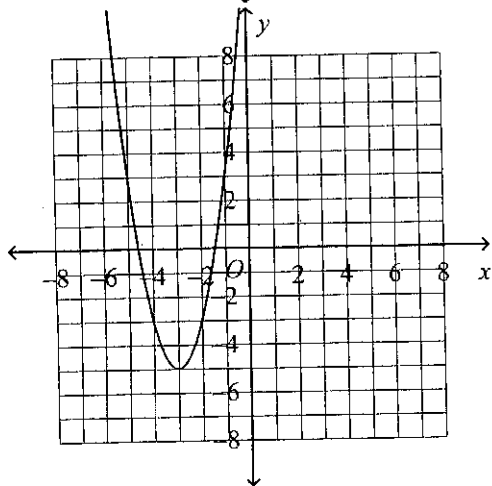
a.



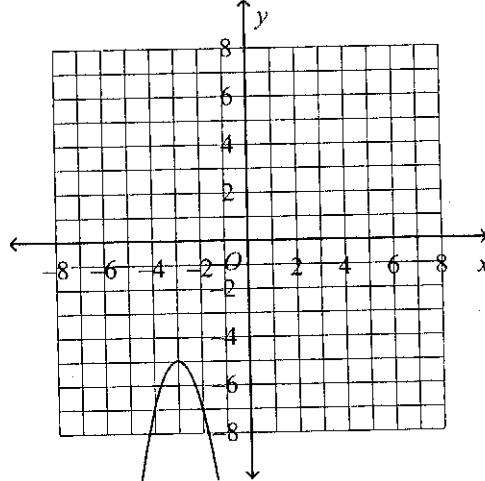
c.



b.



d.



Find a quadratic model for the set of values.

2. $(-2, -6), (0, 2), (4, -54)$

$$-6 = 4a - 2b + c \Rightarrow -6 = 4a - 2b + 2$$

$$2 = c$$

$$-54 = 16a + 4b + c \Rightarrow -54 = 16a + 4b + 2$$

$$-56 = 16a + 4b$$

$$-16 = 8a - 4b$$

$$-56 = 16a + 4b$$

$$-72 = 24a$$

$$-3 = a$$

$$-8 = 4(-3) - 2b$$

$$-8 = -12 - 2b$$

$$4 = -2b$$

$$-2 = b$$

$$y = -3x^2 - 2x + 2$$

1